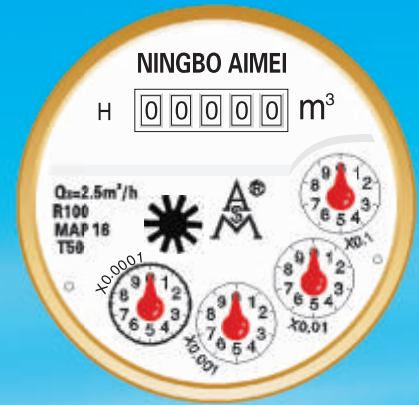




TG ELECTRONICS

Ningbo Aimei Meter Manufacture Co., Ltd.



www.tgelectronics.no

Vidhaugen 114
7550 Hommelvik
Tele:73979017-91795392
e-post: post@tgelectronics.no

LXSG-15E-50E | MULTI JET SUPER DRY WATER METER

APPLICATION

Measuring the volume of cold potable water passing through the pipeline

FEATURES

Multi jet, dry type, magnetic drive, anti-magnetic protection
Pointer-roller indicator, easy and long term clear reading, frost resistance, long durability
Option: Available with pulse output function & non-return valve

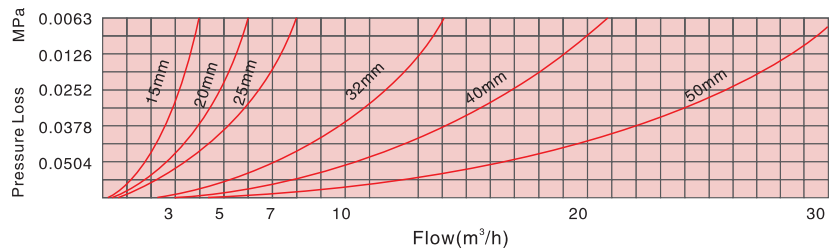
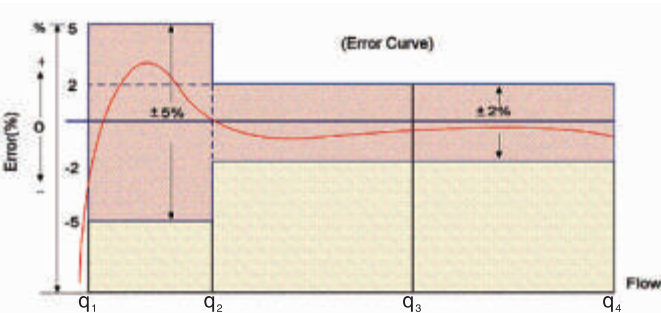
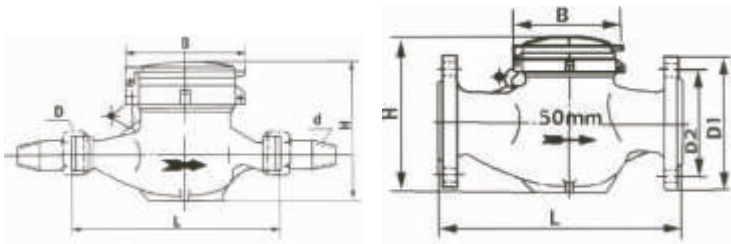
www.tgelectronics.no

MAIN TECHNICAL DATA (ISO 4064-1: 2005)

DN Size	mm inch	15 1/2"	20 3/4"	25 1"	32 1" 1/4	40 1" 1/2	50 2"
Q4(m ³ /h)		3.125	5	7.875	12.5	20	31.25
Q3(m ³ /h)		2.5	4	6.3	10	16	25
R80	Q2(l/h)	50	80	126	200	320	500
	Q1(l/h)	31.25	50	78.75	125	200	312.5
R100	Q2(l/h)	40	64	100.8	160	256	400
	Q1(l/h)	25	40	63	100	160	250
R125	Q2(l/h)	32	51.2	80.64	128	204.8	320
	Q1(l/h)	20	32	50.4	80	128	200
R160	Q2(l/h)	22.5	40	63	100	160	250
	Q1(l/h)	15.62	25	39.37	62.5	100	156.2
Min. Reading (m ³)		0.00005	0.00005	0.00005	0.00005	0.001	0.001
Max. Reading (m ³)		99,999	99,999	99,999	99,999	999,999	999,999
Max. Pressure(MAP)		16	16	16	16	16	16
Pressure loss(Δp)		63	63	63	63	63	63
Max. Temperature		T50 for Cold Water		T90 for Hot Water			
Pulse Output Option		Vmax=24V Imax=100mA Pmax=2W					

DIMENSIONS AND WEIGHTS

Size DN	mm in	15 1/2"	20 3/4"	25 1"	32 1" 1/4	40 1" 1/2	50 2"
Length(L)		165/190	190/195	225/260	230/260	245/300	280/300
Width(B)		99	99	103	104	124	125
Height(H)		104	106	114	117	147	172
Connecting Thread D		G 3/4B	G 1B	G1-1/4B	G1-1/2B	2B	G2-1/2B Flange ISO 7005
Weight (kg)		1.4/1.6	1.7/1.8	2.4/2.6	2.7/2.8	4.5/5.1	8.2/8.5 11/11.5



LXSG-15E-50E Multi Jet Super Dry Water Meter

Exploded View

