

SOLENOID VALVE

2W SERIES SOLENOID VALVE

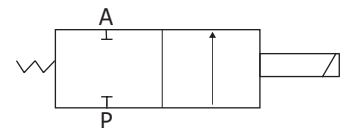


Features

1. Compact volume, large flow, widely use
2. Steel shell, good heat dissipation
3. IP54, low cost.
4. Body material: brass, stainless steel
5. NBR, VITON, EPDM, SILICONE seals are available
6. Normally closed and normally open

* Warning: Make sure the system is clean before installing please fix a filter in the front of solenoid valve for long life.

Symbol



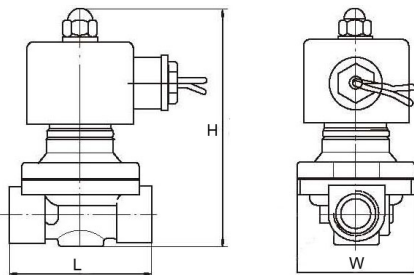
Specification for 2W Series Normally Closed Solenoid Valve

Model	2W025-06	2W025-08	2W040-10	2W160-10	2W160-15	2W200-20	2W250-25	2W350-35	2W400-40	2W500-50
	2W025-06B	2W025-08B	2W040-10B	2W160-10B	2W160-15B	2W200-20B	2W250-25B	2W350-35B	2W400-40B	2W500-50B
Working Type	Normally Closed									
Medium	Air, Water, Light Oil, Gas									
Acting Motion	Direct Acting									
Orifice(mm)	2.5mm	4mm	16mm	20mm	25mm	35mm	40mm	50mm		
CV Value	0.23	0.6	4.8	7.6	12	24	29	48		
Pipe Size	1/8"	1/4"	3/8"	3/8"	1/2"	3/4"	1"	1-1/4"	1-1/2"	2"
Working Pressure	Water, Air 0-120 Psi, Oil 0-70 Psi									
Working Temperature	-5-80 °C									
Viscosity	Under 20CST									
Seal Material	NBR, EDPM, VITON									
Body Material	Brass, Stainless steel									
Voltage	220VAC, 110VAC, 24VDC, 12VDC									

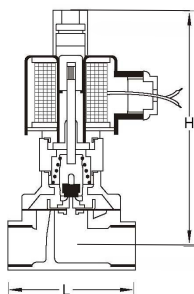
Specification for 2W Series Normally Open Solenoid Valve

Model	2W025-06H	2W025-08H	2W040-10H	2W160-10H	2W160-15H	2W200-20H	2W250-25H	2W350-35H	2W400-40H	2W500-50H
	2W025-06BH	2W025-08BH	2W040-10BH	2W160-10BH	2W160-15BH	2W200-20BH	2W250-25BH	2W350-35BH	2W400-40BH	2W500-50BH
Working Type	Normally Open									
Medium	Air,Water,Light Oil,Gas									
Acting Motion	Direct Acting									
Orifice(mm)	2.5mm	4mm	16mm	20mm	25mm	35mm	40mm	50mm		
CV Value	0.23	0.6	4.8	7.6	12	24	29	48		
Pipe Size	1/8"	1/4"	3/8"	3/8"	1/2"	3/4"	1"	1-1/4"	1-1/2"	2"
Working Pressure	Water,Air 0-70 Psi,Oil 0-40 Psi									
Working Temperature	-5-80 °C									
Viscosity	Under 20CST									
Seal Material	NBR, EDPM, VITON									
Body Material	Brass, Stainless steel									
Voltage	220VAC, 110VAC, 24VDC, 12VDC									

Overall Dimensions



Model	L	W	H	Model	L	W	H
2W025-06	40.5	30	75	2W025-06B	41	30	75
2W025-08	40.5	30	75	2W025-08B	41	30	75
2W040-10	52.5	32	85	2W040-10B	53	32	85
2W160-10	69	57	117	2W160-10B	69	57	117
2W160-15	69	57	117	2W160-15B	69	57	117
2W200-20	73	57	123.5	2W200-20B	73	57	123.5
2W250-25	99	73.5	134.5	2W250-25B	99	73.5	134.5
2W350-35	123	95	172	2W350-35B	123	95	172
2W400-40	123	95	172	2W400-40B	123	95	172
2W500-50	168	123	209	2W500-50B	168	123	209
				2W250-25FB	135		160
				2W320-35FB	152		212
				2W400-40FB	152		215
				2W500-50FB	200		252



Model	L	W	Model	L	W
2W025-06H	40.5	110	2W025-06BH	40.5	110
2W025-08H	40.5	110	2W025-08BH	40.5	110
2W040-10H	52.5	115	2W040-10BH	52.5	115
2W160-10H	69	135	2W160-10BH	69	135
2W160-15H	69	135	2W160-15BH	69	135
2W200-20H	73	142	2W200-20BH	73	142
2W250-25H	99	150	2W250-25BH	99	150
2W350-35H	123	186	2W350-35BH	123	186
2W400-40H	123	197	2W400-40BH	123	197
2W500-50H	168	225	2W500-50BH	168	225
			2W250-25FBH	135	160
			2W320-35FBH	152	230
			2W400-40FBH	152	240
			2W500-50FBH	200	270